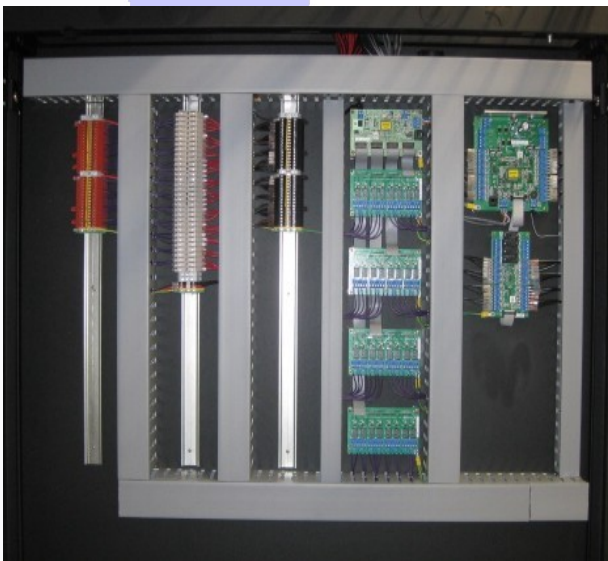


# Genie Version 3



**I**n today's increasingly uncertain environment, building monitoring and access control are critical to the protection of your assets.

**S**afeguarding against theft, fraud and the safety of your personnel are all paramount. You need to ensure you have taken every precaution to protect your company and staff, and maintain full control of your premises and security.



**G**enie has the answer. In a simple to use Windows based software package, Genie will provide you with all your security and access control needs.

Instant alarm notification, controlled access and archive reporting are just some of the standard features. Genie manages access and security for a range of needs from small buildings to multi site, multi panel installations.

Using Genie with Genesis security and access control panels provides a complete solution to all your security needs.

Include CCTV capabilities using many makes of equipment through the exacqVision Management system interface.

Storage units are easily managed by integrating Genie with StorMan Self Storage Software.

Fully designed and owned in Australia, support is readily available from online help, manuals, FAQ's and direct email assistance.

# Genie Version 3



## Data Security

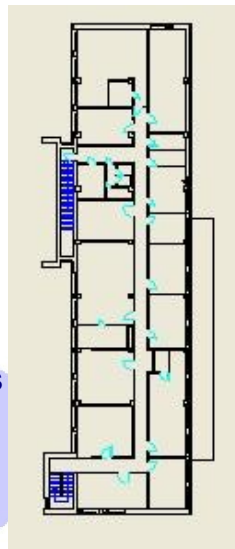
As well as providing for customisation of actions permitted for different operator groups, the data can be partitioned to allow limited access to viewing and control of users, points and reports.

## Ease of Use

Wizards and Graphic displays provide a quick and easy way to navigate Genie. In addition, detailed data editing capabilities are provided for advanced users.

## Graphics

Using common graphic formats for backgrounds, or converting your own DXF files, the built-in editor simplifies showing live points linking other drawings to provide many options when creating informative and easy to navigate graphics. *User drawn icons* allow complete control over the displays.



## Point Trigger Actions

Genie Point Trigger actions extend the flexibility of your system by automatically triggering actions in response to events from your security panels.

Send an email to an administrator or technician in the event of a critical alarm.

Automatically create a list of users on site in the event of a fire alarm.

Connected to the Genesis panels with their powerful scripting functions, this gives the ability to handle special requirements in both the hardware and software.

## Alarms, History and Archives

Alarm screen links to Graphics with a single click. History shows events as they occur for quick reference. View archive reports to find previous events

## Online Help

Extensive context sensitive help and online manuals give examples and explanations throughout the system.

# Genie Version 3



**Genie** has been designed for easy upgrading and site customization allowing for managed growth. By scaling a system Genie can manage user access and security alarms for all size sites.

## Genie Editions

### Lite

An entry level system designed for easy user management of small access control and security sites.

### Standard

Standard scales easily to suit a range of sites from small to large. Graphics, archive reporting, logging operator comments from the alarm screen, extensive operator permissions configuration and easy control of doors and outputs are just some of the standard features.

### Professional

All the features of Genie Standard plus additional specialised options for comprehensive system management. As well as supporting Point Trigger Actions, **Genie Professional** includes recent user history showing access and programming

changes, user trace event logging, selection and sorting of alarms by level of priority, unlimited archives and panels, and customised alarm sounds .

## Options

**Door Watcher** automatically displays the image of users as they gain access at a selected door.

**Partitioning** allows a site to be divided to limit operators access to a selection of points and users. Alarm and History Screens, Graphics and other windows automatically limit selections to those for the current operator.

**Time Attendance** records user access at defined readers for exporting to third party packages such as spread sheets, payroll and accounting.

**CCTV** provides a quick and easy way to view cameras and stored video to determine action required for different situations, using exacqVision systems. (Contact your Dealer for more information.)

**Self Storage** interface with StorMan Self Storage Software simplifies your Unit management. See Self Storage Brochure.

# Genie Version 3



Feature	Lite	Std	Pro
<b>Users</b>			
User Images	No	Yes	Yes
Import from CSV	No	Yes	Yes
Recent History	No	No	Yes
Key Management	Yes	Yes	Yes
<b>Alarms</b>			
Select Graphics from Alarm Screen	No	Yes	Yes
Log Alarm Actions	No	Yes	Yes
Custom Response Instructions	No	No	Yes
Suspend Alarms, optional Escalation	No	No	Yes
<b>Graphics</b>			
BMP, JPG, PNG underlays	No	Yes	Yes
DXF support	No	Yes	Yes
Built-in Editor	No	Yes	Yes
Custom icons	No	No	Yes
Default Graphic for Operator Group	No	Yes	Yes
<b>Reports and Archives</b>			
Archive, Status and Data	Yes	Yes	Yes
Installer Diagnostic Reports	No	Yes	Yes
Unlimited Archives	No	No	Yes
<b>Actions, Schedules, Triggers</b>			
Scheduled backups	Yes	Yes	Yes
Scheduled backup copy	No	Yes	Yes
Trigger Actions on Point Events (includes email)	No	No	Yes
Scheduled Status Reports	No	No	Yes
<b>Operator and Data Security</b>			
Operator Access Time Limit	No	No	Yes
Timeout Logoff for Operators	No	Yes	Yes

Feature	Lite	Std	Pro
Data View for Operators	No	Option	Option
<b>System Limits</b>			
Genesis Panels	1	16	No limit
Doors	8	32 +*	32+*
Inputs	32	128+*	128+*
Users	500	Panels limit	Panels limit
Workstations	1	1-4*	1+*
Operators – system defined	2	6	6
Operators – user defined	0	No limit	No limit
<b>Options</b>			
Door Watcher	No	Yes	Yes
Data Partitioning	No	Yes	Yes
Time Attendance	No	Yes	Yes
Counter Variables	No	Yes	Incl.
External Task Execution	No	No	Yes
CCTV - exacqVision	No	Yes	Yes

\* indicates extension option, \*\* under development

**Genie Self Storage** is currently being developed for integration with StorMan Self Storage Software.

## System Requirements

Windows® XP(SP3), Server 2003, Vista, Win7 (32bit). Recommended 2GB RAM for Vista, Win7; 1GB disk space. Large systems may need more for long term archiving. Serial Port or Ethernet for panel connection. USB with approved driver.

## More Details from

[www.torrensbs.com.au](http://www.torrensbs.com.au)

and

[www.genesiselectronics.com.au](http://www.genesiselectronics.com.au)

## Dealers

### Australia, Pacific and South East Asia

Mainline Security Products - [www.mainline.com.au](http://www.mainline.com.au)

Melbourne +61 3 9596 6688 Brisbane +61 7 3891 2222

### New Zealand

Intek - [www.intek.co.nz](http://www.intek.co.nz)

### Baltic

FIMA - [www.fima.lt](http://www.fima.lt)

Last Updated 8 December 2010

